



# 29 Long Lane, Charlesworth, Glossop, Derbyshire, SK13 5ET

**\*\* SEE OUR VIDEO TOUR \*\*** An immaculately presented, semi-detached dormer bungalow, offering deceptive, extended living space over two floors and enjoying a sunny South Westerly facing, private rear garden. Briefly comprising of an entrance hall, a spacious lounge and sunny conservatory, an only recently refitted dining kitchen with shaker units, two ground floor bedrooms and a bathroom with separate shower, dressing room and stairs leading to the useful converted loft space. Front garden and driveway with space for several cars. Energy Rating E

## £465,000

### Viewing arrangements

Viewing strictly by appointment through the agent

44 High Street West, Glossop, Derbyshire, SK13 8BH 01457 858888

### GROUND FLOOR

#### Entrance Hallway

Composite double glazed front door, pvc double glazed window, central heating radiator, double opening doors to the garage and doors to:

#### Lounge

20'7 x 17'2

Feature fireplace, three central heating radiators, door to the kitchen, pvc double glazed external rear door and patio doors leading through to:

#### Conservatory

12'1 x 11'4

Pvc double glazed windows and doors leading out to the rear garden, laminate wood flooring.

#### Dining Kitchen

21'11 x 10'2

Only recently refitted with a range of shaker style kitchen units including

base cupboards and drawers, work tops and white ceramic double bowl Butler style sink with mixer tap and boiling water tap, AEG split-level electric oven and combination oven/microwave, induction hob and filter hood over, matching wall and larder cupboards, two central heating radiators and two pvc double glazed rear windows.

#### Bedroom One

11'5 x 10'1

Pvc double glazed front window and central heating radiator.

#### Bedroom Two

9'11 x 8'0

Pvc double glazed front window and central heating radiator.

#### Bathroom

A four piece white suite including a panelled bath, corner shower cubicle, low level wc and wash hand basin, vanity unit with mirror and towel radiator.

## Dressing Room

Fitted wardrobes and spindled stairs leading o:

## FIRST FLOOR

### Loft Room

15'9 x 11'11 (max less stairs)

With partly restricted head height, two Velux double glazed skylight windows, two central heating radiators and eaves storage. Storage room housing the Worcester gas fired combination boiler.

## OUTSIDE

### Attached Garage

16'0 x 7'4

Double opening doors power and light, plumbing for an automatic washing machine

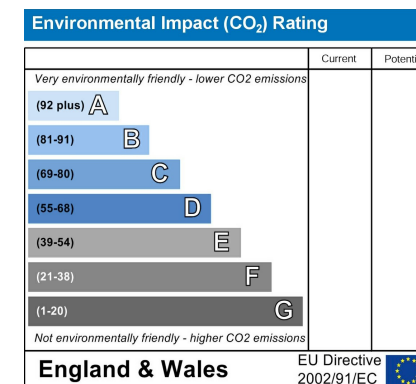
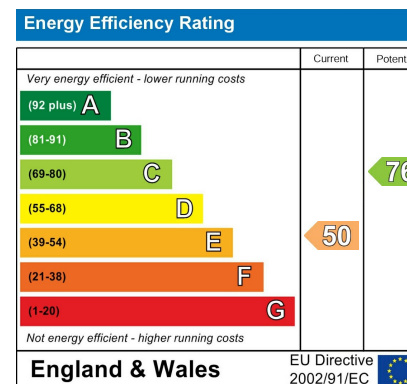
### Gardens

The bungalow has a front garden and driveway with space for several cars, whilst the rear garden includes a patio area, lawn and garden shed all enjoying a good level of privacy and a sunny South Westerly aspect.

Our ref: Cms/cms/0521/26

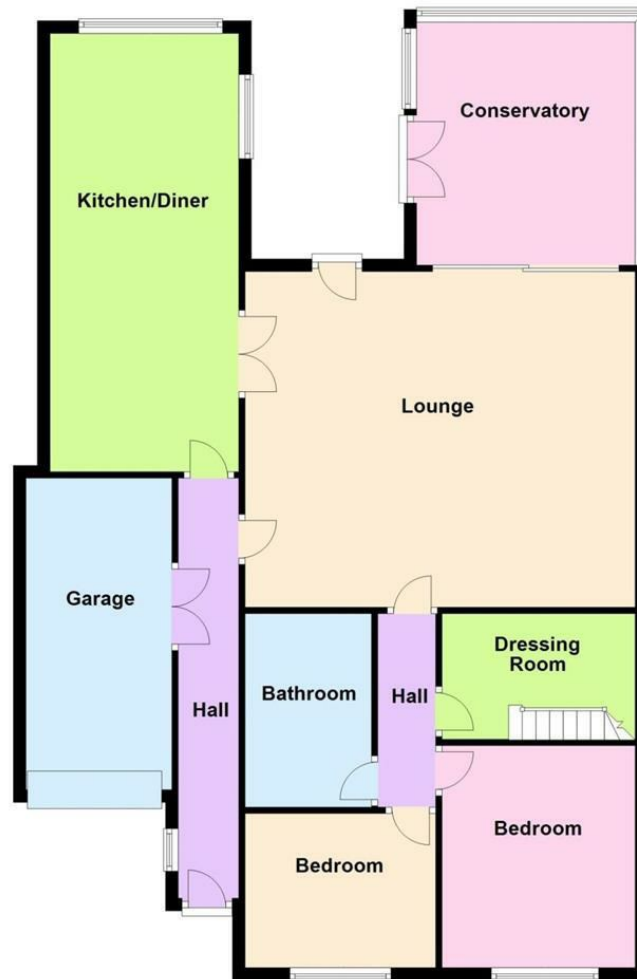
### Note - Anti Money Laundering

To be able to sell or purchase a property in the United Kingdom all agents have a legal requirement to conduct Identity checks on all customers involved in the transaction to fulfil their obligations under Anti Money Laundering regulations. We outsource this check to a third party and a charge will apply. Ask the branch for further details.

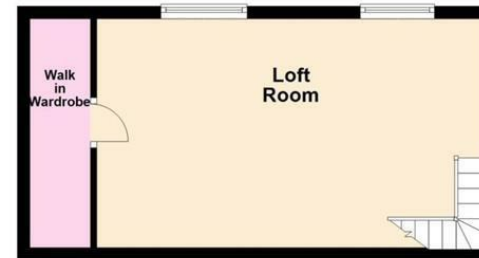




### Ground Floor



### First Floor



These particulars are believed to be accurate but they are not guaranteed and do not form a contract. Neither Jordan Fishwick nor the vendor or lessor accept any responsibility in respect of these particulars, which are not intended to be statements or representations of fact and any intending purchaser or lessee must satisfy himself by inspection or otherwise as to the correctness of each of the statements contained in these particulars. Any floorplans on this brochure are for illustrative purposes only and are not necessarily to scale.

Offices at: Chorlton, Didsbury, Disley, Hale, Glossop, Macclesfield, Manchester Deansgate, Manchester Whitworth Street, New Mills, Sale, Wilmslow and Withington

44 High Street West, Glossop, Derbyshire, SK13 8BH

01457 858888

[glossop@jordanfishwick.co.uk](mailto:glossop@jordanfishwick.co.uk)  
[www.jordanfishwick.co.uk](http://www.jordanfishwick.co.uk)

